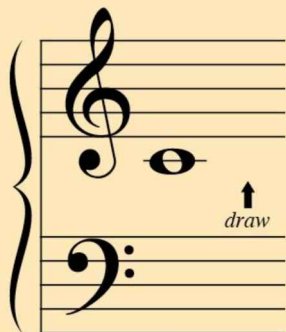


## Middle C

is on a short line just below the treble staff.

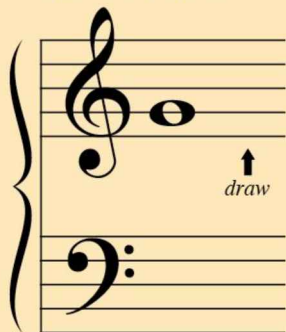
- Draw a Middle C.



## Treble Clef G

is on LINE 2 of the treble clef.

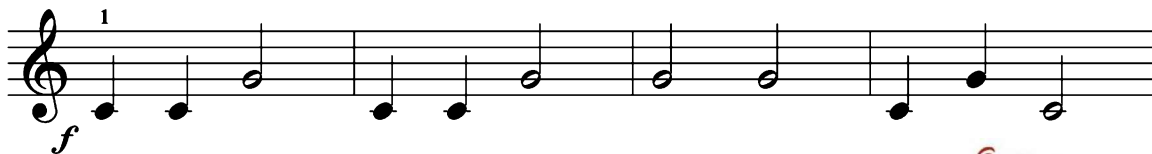
- Draw a Treble G.



# A Twenty-Second Royal Song

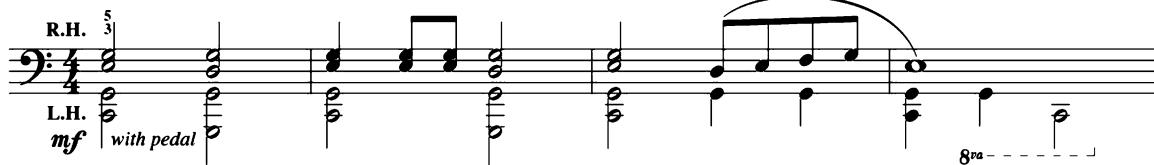
## Improvising with Middle C and Treble G

1. Write each note name in the clock.
2. Now create a twenty-second song with the teacher duet.
  - Play **measures 1-4** as shown.
  - Then *improvise* your own rhythms on **Middle C** and **Treble G**.  
End on C when your teacher tells you.



*improvise*

### Teacher Duet: (Student plays as written)



Now student improvises with Middle C and Treble G.

