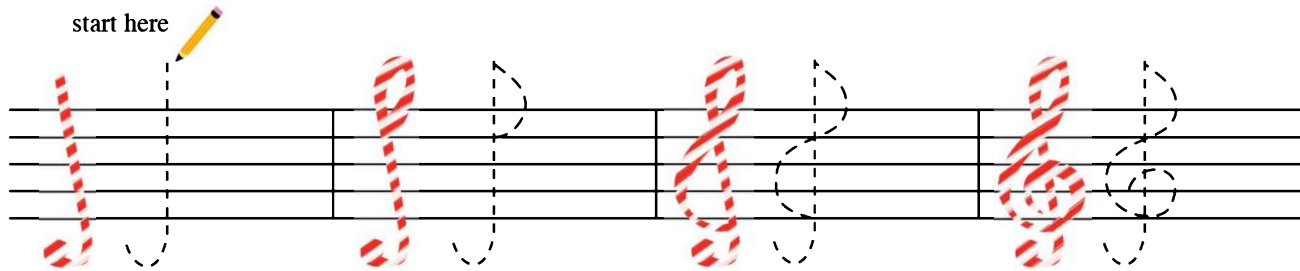


The Treble Clef or G Clef



Treble clefs are fun to draw. Here is how.
Trace the dotted lines.



1. Draw a candy cane or “J.”
Make it begin above the
staff and curve below line 1.

Draw a half-circle that
crosses at line 4.

Swing to the left and
curve down to line 1.

Curl around line 2 -
the **G line**.

2. Now draw 9 **G clefs** on your own. Then trace over the **G line** for each example.
Play this G on the piano.

