

Put an X through each INCORRECT measure in 3/4 time.

Hi, I'm Buddy Barline. May I have this dance?

1-2-3, 1-2-3

DAY 1: Classic Dance

Count: "1-2-3. Read-y Play"

DON'T PRACTICE THIS!

1

p Turn - ing and glide, (2 - 3) hop, hop, hop, glide. (2 - 3)

5

5

2

mf Hop, hop, hop, glid - ing then hop back to C. (2 - 3)

DAY 2: Classic Dance

**DON'T
PRACTICE
THIS!**

1

mf Danc - ers are the glid - ing all o - ver the room,
danc - ing are the rhy - thm of this clas - sic tune.

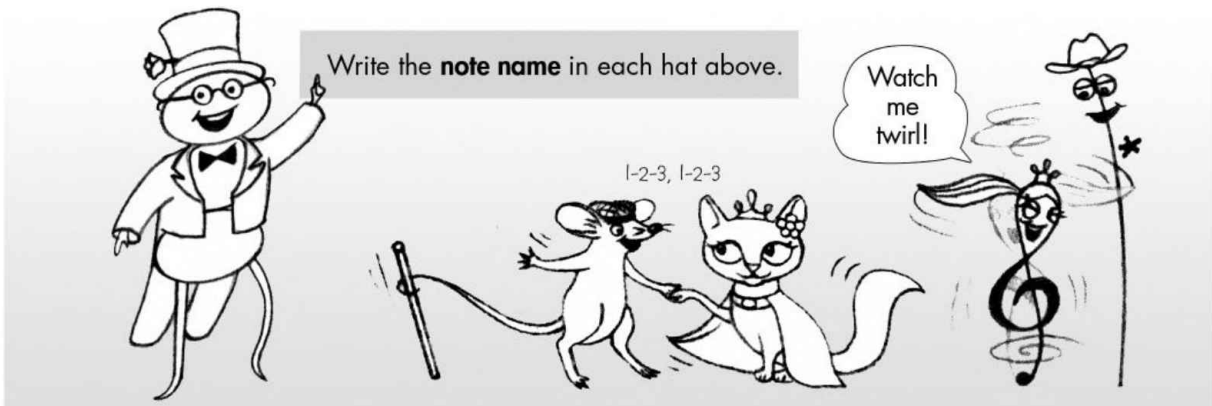
5

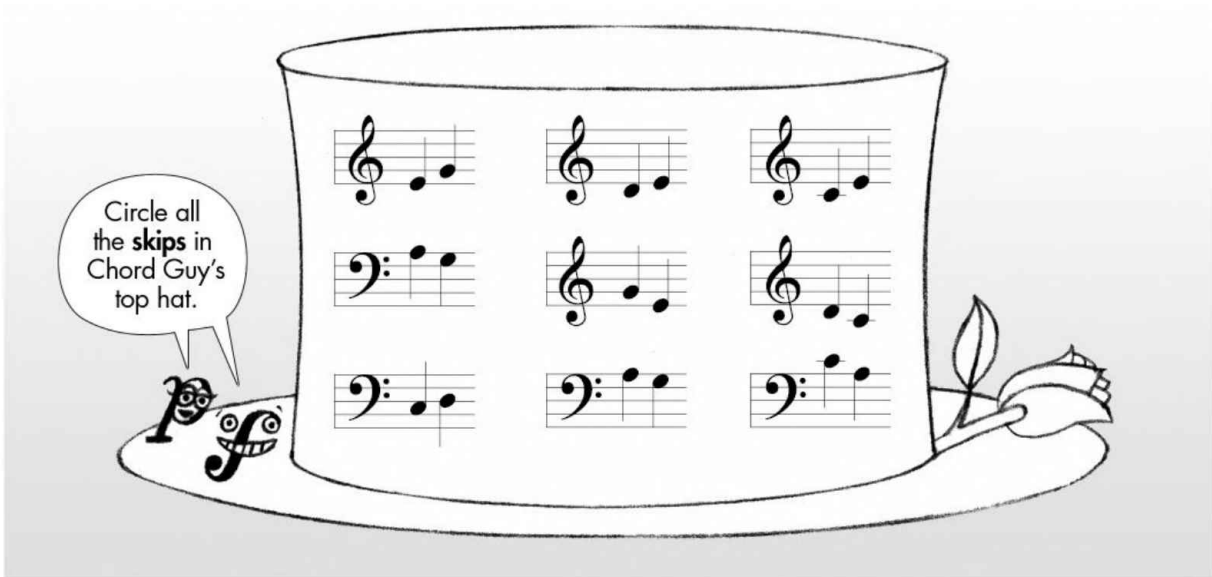
Danc - ers turn gen - tly, then hop, hop, and bow,

p

9

mf danc - ing the rhy - thm of this clas - sic tune.





DAY 3: Classic Dance

DON'T PRACTICE THIS!

1

f First, we'll play for - te as we skip a - round.
p Then we'll play soft - ly for this skip - ping sound.

5 3

DAY 4: Classic Dance

1

p Play the tune soft - ly the first time a - round.
f Play the tune loud - ly and dance to the sound.

1

based on Lesson Book p. 15

DAY 5: Classic Dance

Use only finger 2's to play this song.

**DON'T
PRACTICE
THIS!**

Musical notation for the first system of 'Classic Dance'. It features a grand staff with a treble and bass clef. The time signature is 3/4. The melody is in the treble clef, and the bass line is in the bass clef. The lyrics are: "Hop - ping on my Hop - ping on my 2, hand look what I do. at my com - mand." The first measure is marked with a repeat sign and a fermata. The second measure has a fermata and the number '2' above it. The third measure has a fermata and the number '2' above it. The fourth measure has a fermata and the number '2' above it. The word 'repeat!' is written above the final measure.

Musical notation for the second system of 'Classic Dance'. It features a grand staff with a treble and bass clef. The time signature is 3/4. The melody is in the treble clef, and the bass line is in the bass clef. The lyrics are: "Step - ping, step - ping,". The first measure is marked with a fermata and the number '2' above it. The second measure is marked with a fermata and the number '2' above it. The third measure is marked with a fermata and the number '2' above it. The fourth measure is marked with a fermata and the number '2' above it. The word 'mf' is written below the first measure.

Musical notation for the third system of 'Classic Dance'. It features a grand staff with a treble and bass clef. The time signature is 3/4. The melody is in the treble clef, and the bass line is in the bass clef. The lyrics are: "Hop - ping on 2, look what I do." The first measure is marked with a fermata and the number '2' above it. The second measure is marked with a fermata and the number '2' above it. The third measure is marked with a fermata and the number '2' above it. The fourth measure is marked with a fermata and the number '2' above it. The word 'p' is written below the first measure.

