

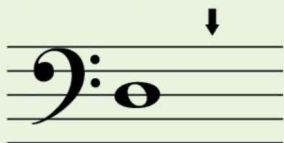
Keychain Notes

New Note Recognition

Bass Clef D

is on LINE 3 of the bass staff.

- Copy Bass D.

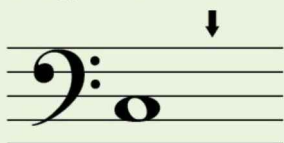


*Hey, diddle, diddle,
D's in the middle.*

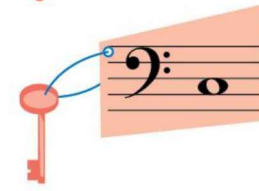
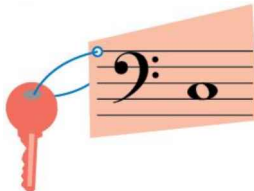
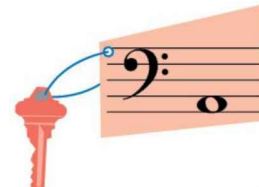
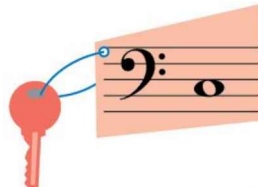
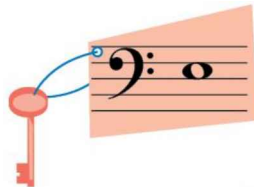
Bass Clef C

is on SPACE 2, a step below Bass D.

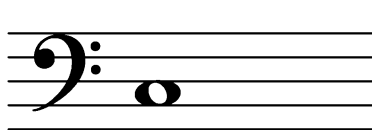
- Copy Bass C.



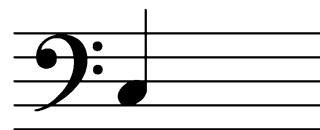
1. Circle each keychain with a Bass C.



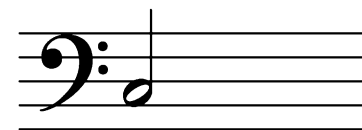
2. Draw two 's on Bass C.



- Draw two 's on Bass C.



- Draw two 's on Bass C.



3. Notice the time signature. Use one Bass C to complete each measure below.

