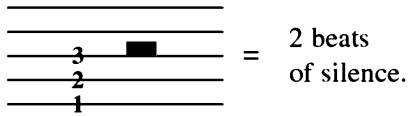


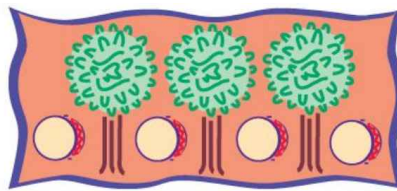
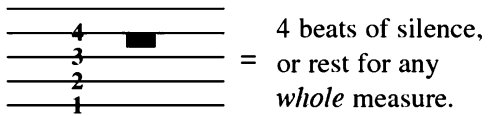


# Half Rest and Whole Rest

The half rest sits  
above line 3 on the staff.



The whole rest hangs  
below line 4 on the staff.



## Forest Drums

Moving quickly (♩ = 144-160)

13

(1 - 2 - 3 - 4) Drum - ming  
 (1 - 2 - 3 - 4) rhy - thm  
 fills the air, fills the air.

*f*  
 shift shift

17

Drum - ming rhy - thm calls me.

21

*mf* I've trav - eled far and long, I'm not a - lone.

25

The sound of for - est drums will lead me home.

29

*mp* *p*

8va - - - - -  
 Play one octave lower than written.



Name each **rest** in *measures 13-16*.

Now turn to *Lightly Row* on p. 35. Add a whole rest for the L.H. in each blank measure.