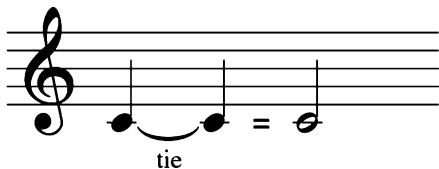




The Tie

A **tie** is a curved line connecting 2 notes on the same line or space.
It means the note will be played *once* but held for the length of both notes combined.



Rhythm Alert: Can you tap this piece on the *closed keyboard lid*, counting aloud “1 - 2 - 3” with your teacher?

Be sure to tap with the correct hand!



Lemonade Stand

_____ 5-Finger Scale

Cheerfully
5 on
—?

mf Come to my lem - on - ade stand to - day.

1 on
—?

Teacher Duet: (Student plays 1 octave higher)

R.H.
L.H.
mp

5

Five cents is all you will pay.

9


No bet - ter lem - on - ade can be found.

13

We've got the best in town!

DISCOVERY



What is the total number of beats for each **tied note** in this piece? _____ 

This piece has a musical question for *measures 1-8*. Is the answer (*measures 9-16*) parallel or contrasting?