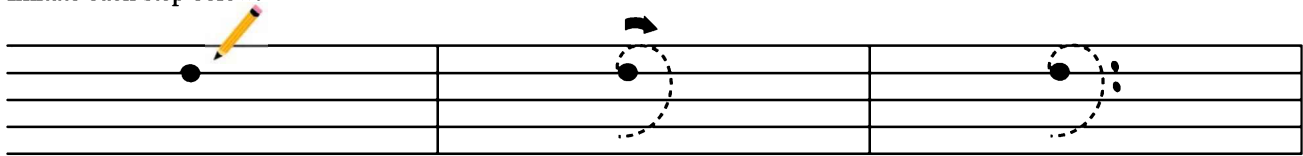


The Bass Clef or F Clef

Bass clefs are also fun to draw.
Imitate each step below.

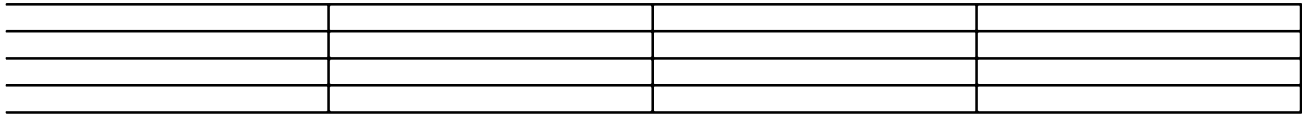


1. Draw a large dot on **line 4**.
(the second line from the top)

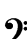

Draw a curving line to the right.
Go to the top of the staff and then
down to the bottom.

Draw 2 dots above and
below line 4 - the **F line**.

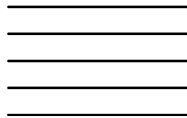
2. Now draw 4 **F clefs** on your own. Then trace over the **F line** for each example. Play this F on the piano.



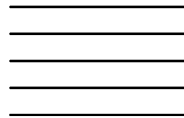
3. Draw a **bass clef** or **treble clef** to show how you think each animal would sing!

Hint:  = low sounds,  = high sounds.

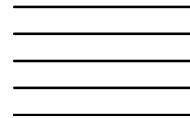
a bluebird



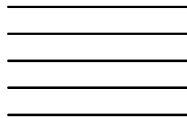
a hummingbird



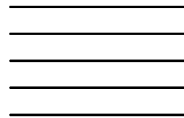
a gorilla



a lion



a horse



a kitten

