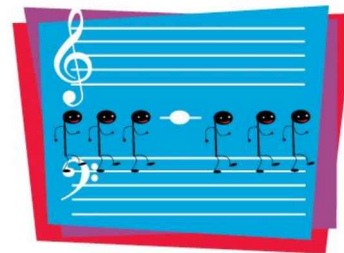
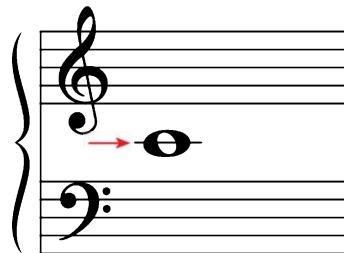


# Learning Middle C

On the staff, Middle C is written on a *short line* between the staves.

- Darken the short line with a pencil.
- Now draw two more Middle C's.



## Middle C March

### R.H. plays

Middle C is closer to the treble staff.

1 repeated notes      ② Watch for finger changes.\*      ③

### L.H. plays

Middle C is closer to the bass staff.

1      ②      ③

### Teacher Duet: (Student plays as written)

1.      2.

\*Teacher Note: The change of fingering prevents the student from equating a certain note (e.g., Middle C) with a specific finger (e.g., thumb).