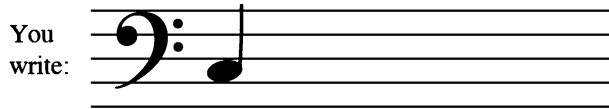


C 5-Finger Scale in the Bass Clef

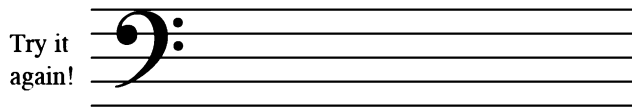


1. Use the example above to help you write the C 5-finger scale in the bass staff.

Notice the stem on Bass C goes UP.
The stems on D E F G go DOWN.



Ex. C _____



Score a Touchdown!

New Note Recognition

Use this winning strategy for notes in the bass clef:

Hey, diddle, diddle, D's in the middle. E's a step ABOVE.
Hey, diddle, diddle, D's in the middle. C's a step BELOW.

2. Write the letter name of each football on the staff.
Name them all to score a touchdown!

